

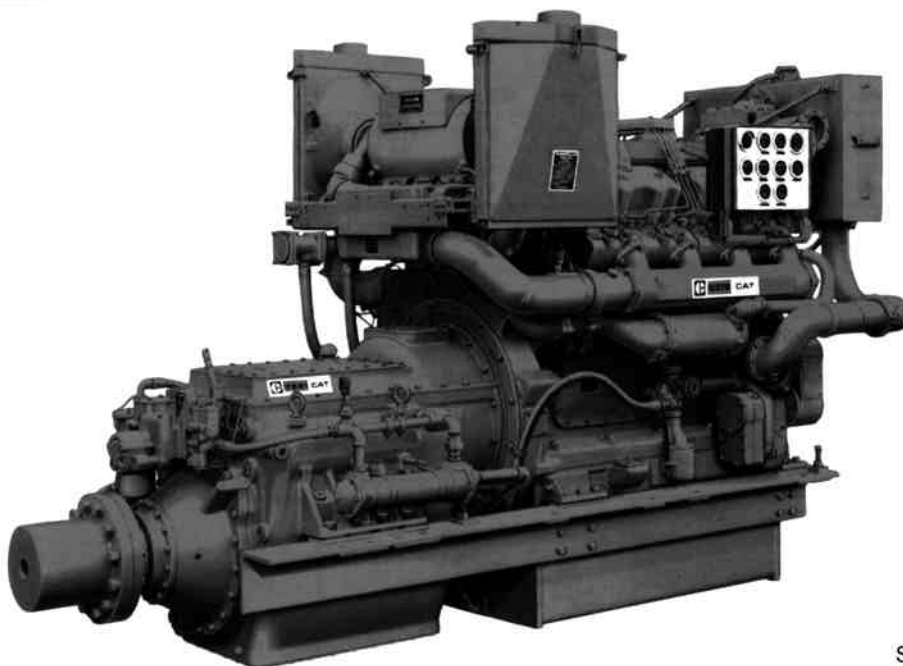


CATERPILLAR

D379

MARINE PROPULSION ENGINE

TURBOCHARGED-AFTERCOOLED



SHOWN WITH ACCESSORY EQUIPMENT:

MARINE TRANSMISSION	CAT 7251	CAT 7241
REDUCTION RATIOS	1.00:1	1.00:1
	2.95:1	2.00:1
	3.24:1	2.94:1
	3.64:1	3.54:1
	4.00:1	4.00:1
	4.39:1	4.67:1
	4.65:1	5.88:1
5.11:1		

V8, 4-STROKE-CYCLE DIESEL

BORE—in (mm)	6.25 (159)
STROKE—in (mm)	8.00 (203)
DISPLACEMENT—cu in (liter)	1,964 (32.2)
ROTATION (from flywheel end)	Clockwise or Counterclockwise
ENGINE WEIGHT, Net Dry (approximate)—lb (kg)	
Separate Circuit Aftercooled (SCAC)	11,775 (5340)
Jacket Water Aftercooled (JWAC)	11,645 (5281)
TRANSMISSION WEIGHT, Net Dry (approximate)—lb (kg)	
7251 (weight varies with gear ratio)	5,295-5,855 (2401-2655)
7241	4,500 (2041)

Note: Caterpillar Marine Engines and Transmissions are approved for certification by the following marine classification societies: ABS, BV, CCSI, DnV, GL, LR, NK, R.I.Na.

STANDARD EQUIPMENT

Air Intake System:

Air Cleaner Adapters
Air Cleaner Service Indicators
Single-Stage Dry Air Cleaners

Control Systems:

Hydra-Mechanical Governor

Cooling System:

Coolant Expansion Tank
Coolant Pump
Coolant Thermostats
Lube Oil Cooler
Non-Self-Priming Fresh Water Pump (SCAC—keel cooled)
Self-Priming Sea Water Pump (SCAC—heat exchanger cooled)

Exhaust System:

Watercooled Exhaust Manifolds (continuous rating only)
Watercooled Turbocharger Shield

Fuel System:

Fuel Filter
Fuel Priming Pump
Fuel Transfer Pump

Instruments and Gauges:

Instrument Panel with Ten Gauges
SAE Standard Dual Tachometer Drive
Service Meter

Lubricating System:

Emergency Connections
Lube Oil Filter

Lube Oil Pump
Manual Sump Pump

Mounting System:

Lifting Eyes
Mounting Rails

Power Takeoffs:

Flywheel Housing, SAE No. 00
Front Accessory Drive

Protection Devices:

Manual Shutoff Control
Shutoffs—Oil Pressure and Coolant
 Temperature Contactors, Intake
 Manifold Temperature Contactor (SCAC)

ACCESSORY EQUIPMENT*

Control Systems:

Engine Mounted
Pilot House

Cooling System:

Emergency Coolant Connections
Heat Exchangers

Exhaust System:

Muffler

Fuel System:

Double Wall Fuel Lines
Duplex Fuel Filter
Flexible Fuel Lines

Instruments and Gauges:

Exhaust Pyrometer and Thermocouples
Pilot House Panels
Tachometer

Lubricating System:

Duplex Lube Oil Filters

Marine Transmissions:

Cat 7241, 7251
Emergency Lube Oil Connections
Trolling Valve

Mounting System:

Sound Isolation Mounting

Power Takeoffs:

Auxiliary Drive Pulleys
Front Enclosed Clutch
Protection Devices:
Overspeed Shutoff
Rack Solenoid Shutoffs (24, 30-32V)

Spare Parts:

ABS, BV, DnV, GL, LR, NK, R.I.Na
Approved Parts Kits (engine and transmission)

Starting Systems:

Air Starting
Battery Chargers
Battery Sets
Charging Alternators (24, 30-32V)
Electric Starting (24, 30-32V)
Glow Plugs

*Consult your Caterpillar Dealer for additional accessory equipment.

RATINGS

	SEPARATE CIRCUIT AFTERCOOLED-85°F*			SEPARATE CIRCUIT AFTERCOOLED-110°F**			JACKET WATER AFTERCOOLED					
	rpm	hp	kW	rpm	hp	kW	rpm	hp	kW			
CONTINUOUS	1225	565	421	1225	545	406	1225	500	373			
Shaft Power	1225	548	409	1225	529	394	1225	485	362			
Fuel Rate	rpm	U.S. gph	liter/h	rpm	U.S. gph	liter/h	rpm	U.S. gph	liter/h			
	1225	31.8	120.3	1225	31.2	118.1	1225	29.0	109.7			
	1100	22.4	84.9	1100	22.3	84.5	1100	21.1	79.8			
	1000	16.9	63.9	1000	16.6	63.0	1000	16.0	60.4			
	900	12.3	46.6	900	11.6	44.1	900	11.7	44.3			
MEDIUM-DUTY COMMERCIAL	rpm	hp	kW	Consult your Caterpillar Dealer or the factory for appropriate rating.			rpm	hp	kW			
	1225	625	466				1225	550	410			
	rpm	U.S. gph	liter/h				rpm	U.S. gph	liter/h			
	1225	35.1	133.7				1225	31.7	120.0			
	1100	25.5	96.1				1100	23.1	87.3			
Shaft Power	1225	607	452	Consult your Caterpillar Dealer or the factory for appropriate rating.			1225	534	398			
	rpm	U.S. gph	liter/h				rpm	U.S. gph	liter/h			
	1225	35.1	133.7				1225	31.7	120.0			
	1100	25.5	96.1				1100	23.1	87.3			
	1000	19.0	71.8				1000	17.4	65.9			
Fuel Rate	900	13.8	52.4	Consult your Caterpillar Dealer or the factory for appropriate rating.			900	12.8	48.4			
	rpm	hp	kW				rpm	hp	kW			
	1300	640	477				Consult your Caterpillar Dealer or the factory for appropriate rating.			1300	621	463
	rpm	U.S. gph	liter/h							rpm	U.S. gph	liter/h
	1300	36.9	139.7							1300	36.9	139.7
1200	28.1	106.2	1200	28.1	106.2							
1100	21.5	81.4	1100	21.5	81.4							
Shaft Power	1000	16.1	60.9	Consult your Caterpillar Dealer or the factory for appropriate rating.			1000	16.1	60.9			
	rpm	hp	kW				rpm	hp	kW			
	1300	640	477				1300	640	477			
	rpm	U.S. gph	liter/h				rpm	U.S. gph	liter/h			
Fuel Rate	1300	36.9	139.7	Consult your Caterpillar Dealer or the factory for appropriate rating.			1300	36.9	139.7			
	1200	28.1	106.2				1200	28.1	106.2			
	1100	21.5	81.4				1100	21.5	81.4			
	1000	16.1	60.9				1000	16.1	60.9			

*85°F (30°C) water to aftercooler.
**110°F (44°C) water to aftercooler.

RATING DEFINITIONS

Continuous: For heavy-duty service where the engine is operated at rated load and speed without interruption or load cycling.

Medium-Duty Commercial: For service where engine load and speed are constant with some cycling. Full power operation is limited to four hour periods followed by one hour at continuous power levels and below. Synonymous with "maximum continuous" ratings used by marine classification societies.

Light-Duty Commercial: For service where engine load and speed are cyclical. Full power operation is limited to one hour periods followed by one hour at continuous power levels and below.

RATING CONDITIONS

Ratings are based on SAE J816 standard conditions of 29.38 in Hg (99.2 kPa) and 85°F (30°C). These ratings also apply at DIN 6270 standard conditions of 97.8 kPa (28.97 in Hg) and 20°C (68°F).

Shaft power represents power requirements of a typical fixed pitch propeller and 97 percent of gross engine horsepower.

Fuel rates are based on power requirements of a typical fixed pitch propeller and fuel oil having an HHV of 19,590 Btu/lb (45,570 kJ/kg) and weighing 7.076 lb/U.S. gal (848 g/liter).

